

THIS MOMENT FOR

COMMUNITY HEALTH



UPMC
**CHILDREN'S
HOSPITAL**

FOUNDATION

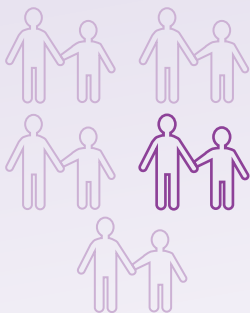
WHY, IN *THIS MOMENT*, COMMUNITY HEALTH MATTERS

Since its inception, UPMC Children's Hospital of Pittsburgh has endeavored to ensure every child has access to the care and support they need to lead a healthy life.

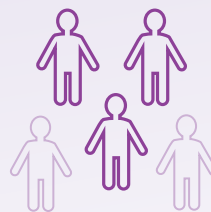
Through proactive outreach and partnerships throughout Allegheny County and western Pennsylvania, we have taken strategic steps to meet the medical, behavioral, and social needs of every child and their family where and when they need it most.

Yet, roughly one in five families in Pittsburgh live below the poverty line, which is twice as many families compared to the statewide average. Approximately three in five children experience some form of violence each year, and nearly half report more than one instance. For children living in these underserved neighborhoods, the weight of unstable living conditions, food insecurities, exposure to gun violence, and educational challenges undercuts the opportunity to be healthy and best able to grow and thrive.

Inequities like these directly impact the health and well-being of children throughout western Pennsylvania and beyond.



Roughly
**ONE IN FIVE
FAMILIES**
in Pittsburgh
live below the
poverty line.



Approximately
**THREE IN FIVE
CHILDREN**
experience some
form of violence
each year.



UPMC Children's serves more than 1.5 million children and families in a given year — many of whom never step foot inside our hospital.

Whether in a health care facility or through a school partnership, UPMC Children's is best positioned to care for, and advocate on behalf of, every child and family in our region and beyond.

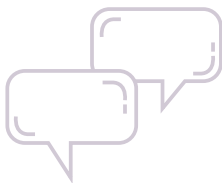
Yet, research has uncovered the direct impact critical disparities have on the overall health and well-being of children and families in our community. These challenges outweigh the scalability and reach our current programs and resources needed to ensure equity in health, access, and care.

With your help, in *This Moment*, our multi-year fundraising campaign will accelerate UPMC Children's ability to create effective and long-lasting change in the overall health and well-being of our community — creating a bright and healthy future for Pittsburghers today and in years to come.

OUR VISION FOR COMMUNITY HEALTH

UPMC Children’s vision is that children and families of all backgrounds and abilities are healthy and are best able to grow and thrive. To do this, we seek to make western Pennsylvania one of the healthiest places to live.

Our efforts to increase equity in access and care for families and children have evolved through successful initiatives and resources such as early prenatal care and parenting programs, Family Care Connection centers, youth violence prevention programs, school interventions, and more. Yet, our ability to make a transformational impact in our community is dependent on a sustainable and robust source of funding to maintain, expand, and implement opportunities that will accelerate our vision through:



CLINICAL COMMUNITY COLLABORATIONS

Collaborating with health care providers, community organizations, and public health agencies allows us to work together to ensure more families are able to access preventative and chronic health services and share best practices to improve the quality of care for all children locally, statewide, and nationally.

UPMC Children’s partners with clinical providers, the Allegheny County Health Department, and community partners to identify and prioritize significant health needs through the Community Health Needs Assessment. The annual report provides critical details to guide the health and well-being of children in our region and identifies the opportunities for improvement.



COMMUNITY HEALTH RESEARCH

Evaluating novel research-informed interventions produces collective impact through a hub of child health data and the involvement of community members as citizen scientists to transform the trajectory of children’s lives towards hope and accomplishments.

Community-engaged research lives at the intersection of research, learning, and health services delivery, as the conduit for meaningful community involvement and the swift application of data-to-action. Integrating community roles within research teams influences the rate of neighborhood program implementation, fuels workforce development, and informs our strategies for bolstering and enhancing equity in child health and mental wellbeing. With these efforts, UPMC Children’s is creating a blueprint for how to establish sustainable collective impact, cross-sector collaborations, and drive innovation to implement best practices and policies that support child thriving and health equity.



HEALTH AND PREVENTION PROGRAMS

Partnering with schools, out-of-school programs, education providers, and community-based organizations to create environments for healthy eating, physical activity, trauma sensitivity, violence prevention, and safety.

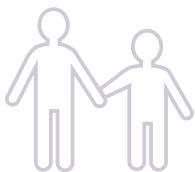
UPMC Children's partners with the Ronald McDonald Care Mobile, a clinic on wheels, to provide immunizations and vaccinations, wellness check-ups, sports physicals, and more to over 40 unique locations and communities. Annually, roughly 1,000 children and youth are cared for throughout the region thanks to the Care Mobile.



OUTREACH AND EDUCATION

Promoting the health and well-being of children and families by implementing professional development programs for school- and community-based health care providers; improving the quality of care delivered at school; and preparing more leaders to address immediate medical, behavioral, and social needs.

Through the Alliance for a Healthier Generation, UPMC Children's is supporting roughly 36,000 students among more than 83 local and regional schools with evidence-based programs that promote a culture of health and strengthen the care coordination with school nurses by advancing their expertise and equipping them with resources and tools to care for children during the school day.



FAMILY AND SOCIAL NEEDS SUPPORT

Delivering neighborhood-based services and programs at Family Care Connections (FCC), which care for more than 3,000 families a year.

During the pandemic, our FCC locations cared for a 129% increase of families and children than in years prior (1,915 families and 2,782 children) without increasing their workforce. These locations have made care more accessible and have helped families maintain vaccine and wellness check-ups, minimizing the chances of their children needing hospitalization in the future.

LIMITATIONS IN GROWTH

UPMC Children's is best positioned to make western Pennsylvania one of the healthiest places for children and families to grow and thrive.

Unlike clinical care, community health programs do not generate revenue that can be re-invested in the initiatives needed for growth. These programs operate within a fixed hospital budget, which means the only support available to expand their success is through grants and philanthropic investment.

Grants have grown increasingly competitive for community health initiatives and significantly lack for preventative services. This has put increasing pressure on our workforce to serve a growing number of families and children without scaling the resources available to meet the growing spectrum of needs on which families depend.

These challenges have limited the flexibility to grow key initiatives that will have a transformative and long-lasting impact for children in need, leaving philanthropic investment as the only option for advancement.

INVESTING IN OUR COMMUNITY

With your help, we will pursue our bold vision by strengthening our community-centric programs and services and expanding them to the communities in need of our care.

Philanthropic investment in the following priorities will fuel advocacy, data-driven understandings, programming, and community collaboration to ensure equity in care, access, and quality is made possible for all children and families.

Bolster our prevention, advocacy, and policy infrastructure to:

- Strengthen and expand vital health, safety, and prevention programs that reduce the chance of child hospitalizations.
- Accelerate critical research initiatives that will deepen our understanding of the disparities we must address to improve the well-being of all families.
- Publish and promote data-driven findings to educate the public on health-related issues, best practices, and insights that can influence policy change on behalf of children's health at the local, state, and national levels.

Increase access to care and resource navigation by investing in:

- Recruitment of more clinicians and staff to meet the demand of children who are medically underserved, paying special attention to diversity, equity, and inclusion of our workforce to better reflect the communities we serve, thus deepening trust with a greater number of children, families, and community partners.
- Expansion of our community-centered health hubs and mobile health services to create spaces and places for families to access quality care in vulnerable neighborhoods.
- Integration of transportation, food, and housing security resources throughout our clinical locations to best support and care for the whole family.

Establish permanence in community health initiatives with sustainable endowed funding to:

- Ensure these vital community-centered services exist in perpetuity.
- Provide flexibility to invest in new opportunities in the future.
- Solidify our commitment to the health and well-being of every child and family in our region and beyond.



Our success in advancing our vision is dependent on support from donors like you.

To track our advancements towards our vision for community health, we will measure our success in three primary ways. Our first measure of success will be the growth of our clinicians and staff, with dedicated attention to the inclusion and representation of community members in our workforce. Our second measure will be the expansion of our services based on the increase in our community collaborators, school partnerships, and regional footprint. Finally, our third measure will be the acceleration at which we publish and promote data-driven findings and insights for public consumption.

YOUR IMPACT AT UPMC CHILDREN'S

At UPMC Children's, our priority is the health, safety, and well-being of every child and family in our region both inside and outside of our hospital walls. Philanthropic support is vital to maintaining the care UPMC Children's provides to families in need. It also enables us to expand care and increase access for our most vulnerable communities. With your support, we can uncover the depth of disparities that challenge a child's ability to grow and thrive; promote findings and resources that equip families to be their healthiest; and advocate for pediatric health issues that can influence policy change at the local, state, and national levels.

UPMC Children's is best positioned to provide services that will ensure children and families of all backgrounds and abilities are healthy and are best able to grow and thrive. Your philanthropic investment in *This Moment* will transform our vision into reality and improve the quality of life for every child in our region and beyond.



Philanthropic support of community health initiatives enables us to invest in the key programs and personnel to deliver services and to support our most vulnerable children and families.

On behalf of UPMC Children's Hospital Foundation, thank you for your support of our mission and your commitment to the health of children.

UPMC
CHILDREN'S
HOSPITAL

FOUNDATION

givetochildrens.org